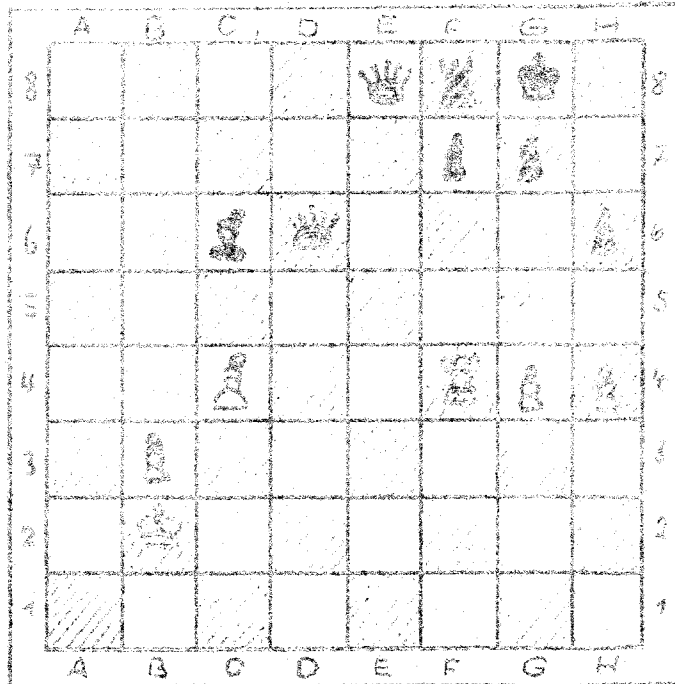


Können Sie schätzen ?

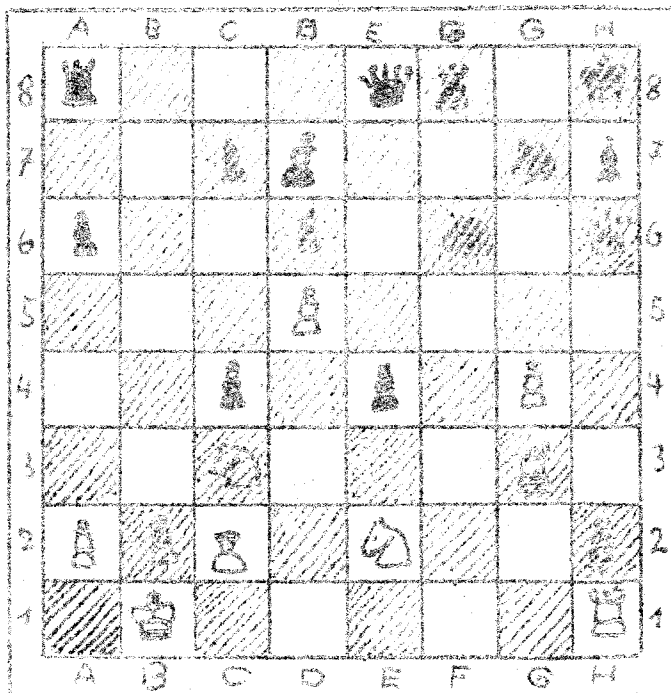


A 5

Weiß: Kb2 - Dd6 - Tf4 - Le4 - b3 - g4 - h4 = (7)

Schwarz: Kg8 - Dd8 - Tf8 - Le6 - f7 - g7 - h6 = (7)

Schwarz am Zuge



A 6

Weiß: Kb1 - Dh5 - Tg3 - Th1 - Le2 - Sc3 - Se2 -

e2 - b2 - d5 - g4 - h2 = (12)

Schwarz: Kh8 - Dd8 - Ta8 - Tf8 - Ld7 - Sf6 - Sg7 -

a6 - e7 - c4 - d6 - e4 - b7 = (13)

Weiß am Zuge