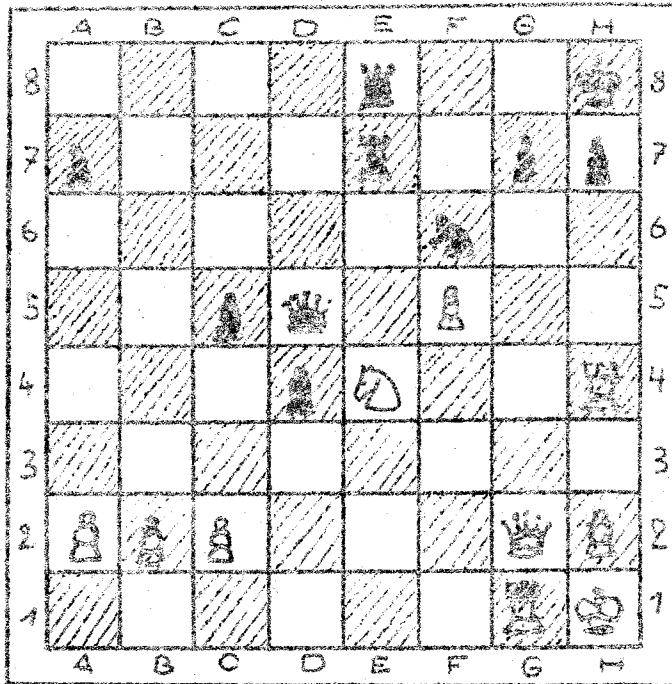
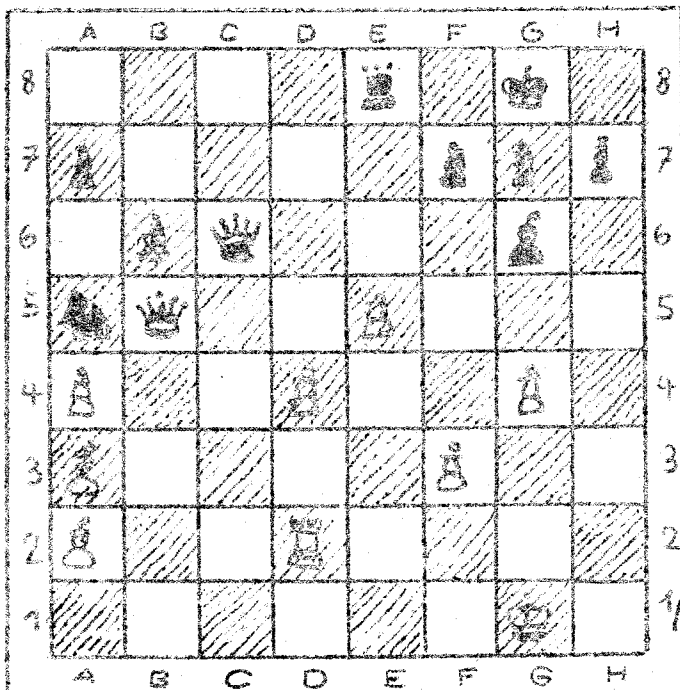


Können Sie schätzen?



A 3

Weiß: Kh1 - Dg2 - Tg1 - Tb4 - Se5 -
 a2 - b2 - c2 - f5 - h2 - (10)
 Schwarz: Kh8 - Dd5 - Te7 - Te8 - Sf6 -
 a7 - c5 - d4 - b7 - h7 - (10)
 Weiß am Zuge



A 4

Weiß: Kc1 - Db5 - Td2 - La2 - La3 -
 a4 - d4 - e5 - f3 - g4 - (10)
 Schwarz: Kg8 - Dc6 - Te8 - Lg6 - Sa5 -
 a6 - b7 - f7 - g7 - h7 - (10)
 Schwarz am Zuge